

Ερμής Αργ/λης **63 - 99** Αιγάλεω

80%	16 / 20	FT	13 / 20	65%
43%	19 / 44	2FG	22 / 29	76%
14%	3 / 22	3FG	14 / 36	39%
30	20 - 10	Rb	36 - 13	49
15		Tu	17	

Referees: Μπον, Καραπαπάς, Πολάτογλου

By Quarter	1	2	3	4
Ερμής Αργ/λης	14	7	20	22
Αιγάλεω	27	29	21	22

End of Quarter	1	2	3	4
Ερμής Αργ/λης	14	21	41	63
Αιγάλεω	27	56	77	99



## Ερμής Αργ/λης

Coach: Π. Γκαναβίας, Αρ. Καλαμπόγιας, Στ. Παπασυριδιάκος

Fastbreaks: 1 / 4

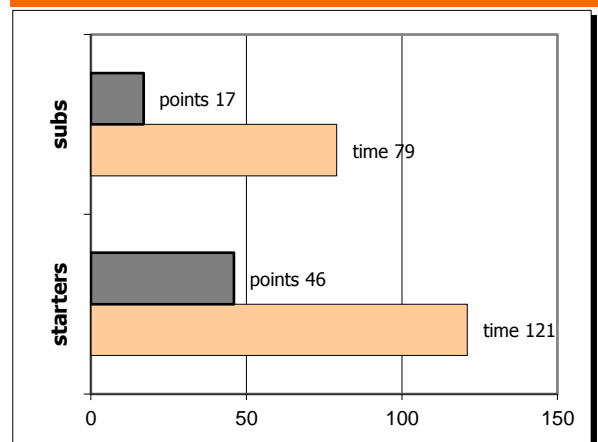
#	Player	Time (min)	Pts	Ft	2Fg	3Fg	+/-	Rbs		As	St	Tu	Bl	Fouls		Eff
								de	of					dr	co	
4	Τσακναρίδης Β.	22	7	3 / 5	2 / 5	0 / 1	-30	1	1	2	1	2	0	3	1	4
<b>0</b>	<b>Vicentic D.</b>	<b>33</b>	<b>21</b>	<b>3 / 5</b>	<b>9 / 16</b>	<b>0 / 3</b>	<b>-34</b>	<b>5</b>	<b>2</b>	<b>1</b>	<b>2</b>	<b>2</b>	<b>0</b>	<b>6</b>	<b>3</b>	<b>17</b>
69	Τσίμης Δ.	2	0	0 / 0	0 / 1	0 / 0	-6	0	0	0	2	0	0	0	2	1
7	Παξινός Σ.	27	2	0 / 0	1 / 2	0 / 0	-22	4	0	1	2	0	0	1	1	8
<b>8</b>	<b>Πεφάνης Αν.</b>	<b>25</b>	<b>2</b>	<b>0 / 0</b>	<b>1 / 3</b>	<b>0 / 5</b>	<b>-31</b>	<b>2</b>	<b>2</b>	<b>1</b>	<b>2</b>	<b>1</b>	<b>0</b>	<b>3</b>	<b>3</b>	<b>1</b>
<b>1</b>	<b>Παπαπέτρου Γ.</b>	<b>27</b>	<b>11</b>	<b>0 / 0</b>	<b>4 / 6</b>	<b>1 / 5</b>	<b>-35</b>	<b>4</b>	<b>0</b>	<b>1</b>	<b>2</b>	<b>2</b>	<b>0</b>	<b>2</b>	<b>3</b>	<b>10</b>
<b>10</b>	<b>Αμπατζής Ν.</b>	<b>8</b>	<b>0</b>	<b>0 / 0</b>	<b>0 / 1</b>	<b>0 / 0</b>	<b>-1</b>	<b>0</b>	<b>1</b>	<b>1</b>	<b>0</b>	<b>0</b>	<b>0</b>	<b>0</b>	<b>1</b>	<b>1</b>
<b>11</b>	<b>Κυριλής Θ.</b>	<b>28</b>	<b>12</b>	<b>5 / 5</b>	<b>2 / 8</b>	<b>1 / 5</b>	<b>-16</b>	<b>1</b>	<b>0</b>	<b>1</b>	<b>1</b>	<b>2</b>	<b>0</b>	<b>3</b>	<b>3</b>	<b>3</b>
16	Τραχανάς Σπ.	8	0	0 / 0	0 / 0	0 / 0	0	1	0	0	1	0	0	0	1	2
13	Χατζόπουλος Χρ.	5	4	4 / 4	0 / 1	0 / 0	4	1	1	0	0	1	0	2	1	4
77	Κατωπόδης Αν.	15	4	1 / 1	0 / 1	1 / 3	-9	1	2	2	1	2	0	2	1	5
15	Σαλούστρος Ευ.	0	0	0 / 0	0 / 0	0 / 0	0	0	0	0	0	0	0	0	0	-
Team								0	1			3		1	2	
1st quarter			14	3 / 5	4 / 14	1 / 5		6	4	4	1	5	0	5	7	8
2nd quarter			7	1 / 2	3 / 7	0 / 5		3	0	1	3	4	0	4	4	0
3rd quarter			20	6 / 7	4 / 10	2 / 7		5	4	2	3	2	0	6	6	20
4th quarter			22	6 / 6	8 / 13	0 / 5		6	2	3	7	4	0	8	5	26
<b>Final Stats</b>		<b>200</b>	<b>63</b>	<b>16 / 20</b>	<b>19 / 44</b>	<b>3 / 22</b>	<b>-180</b>	<b>20</b>	<b>10</b>	<b>10</b>	<b>14</b>	<b>15</b>	<b>0</b>	<b>23</b>	<b>22</b>	<b>54</b>
				<b>80%</b>	<b>43%</b>	<b>14%</b>		<b>30</b>								

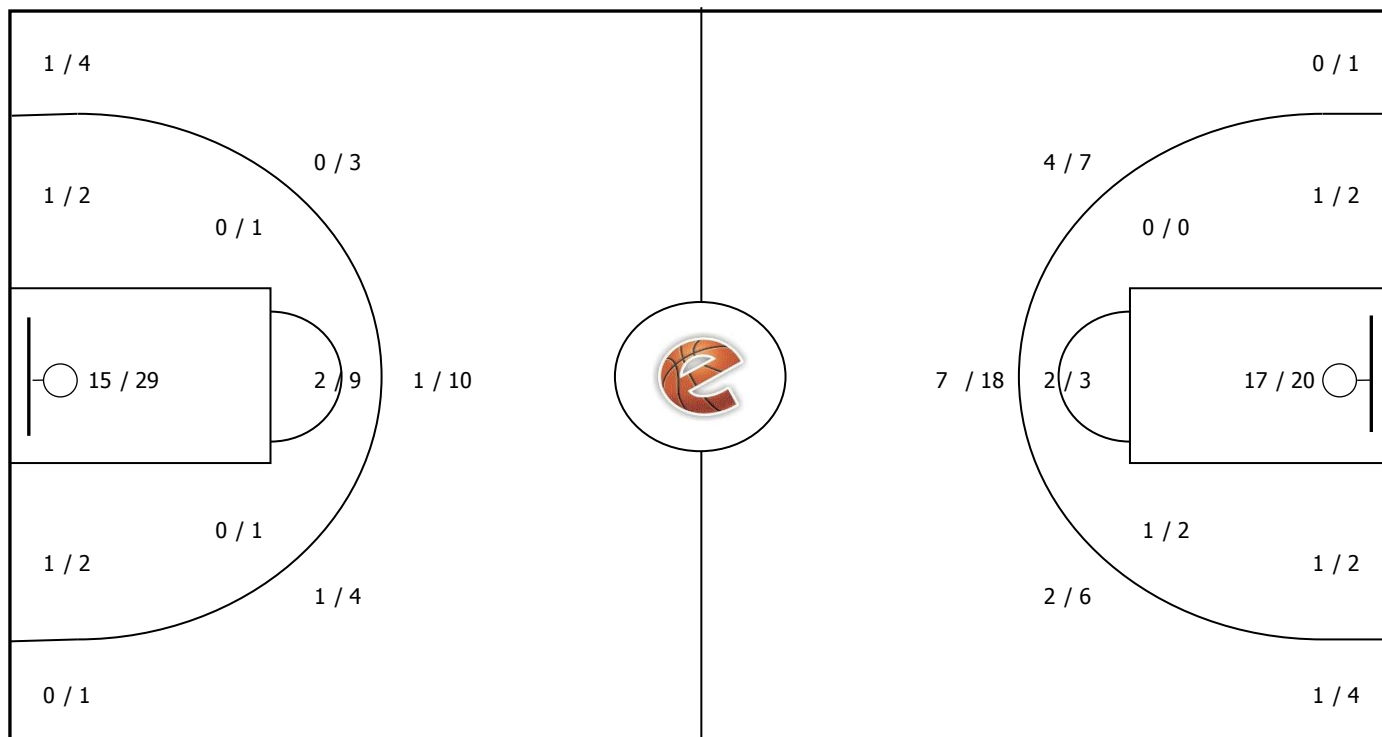
## Αιγάλεω

Coach: Δ. Παπαδόπουλος, Σ. Καραδήμας

#	Player	Pts	-	3s
16	Κολσουζογλου Κ.	6	-	0
5	Τζαβέλλας Αθ.	1	-	0
<b>6</b>	<b>Παπαδιονυσίου Ευ.</b>	<b>23</b>	-	<b>1</b>
20	Νικολιδάκης Αγ.	0	-	0
<b>21</b>	<b>Βασιλόπουλος Φ.</b>	<b>34</b>	-	<b>11</b>
<b>9</b>	<b>Ζαραϊδώνης Αρ.</b>	<b>6</b>	-	<b>0</b>
10	Τσορμπατζόγλου Ι.	3	-	1
<b>11</b>	<b>Αγγελή Σ.</b>	<b>14</b>	-	<b>1</b>
<b>55</b>	<b>Τόλα Τζ.</b>	<b>8</b>	-	<b>0</b>
13	Burgic D.	4	-	0
99	Βέλκος Στ.	0	-	0
15	Ολύμπιος Κ.	0	-	0

## Starters - Subs ratio

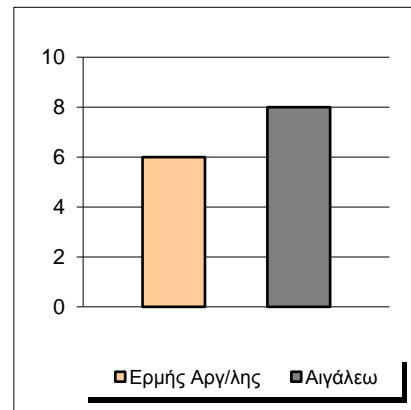
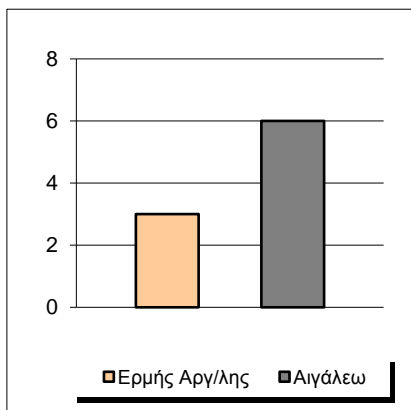
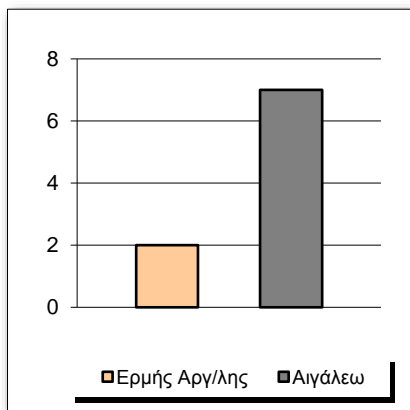




Fastbreak Pts

Turnover Pts

Second Chance Pts



Possessions

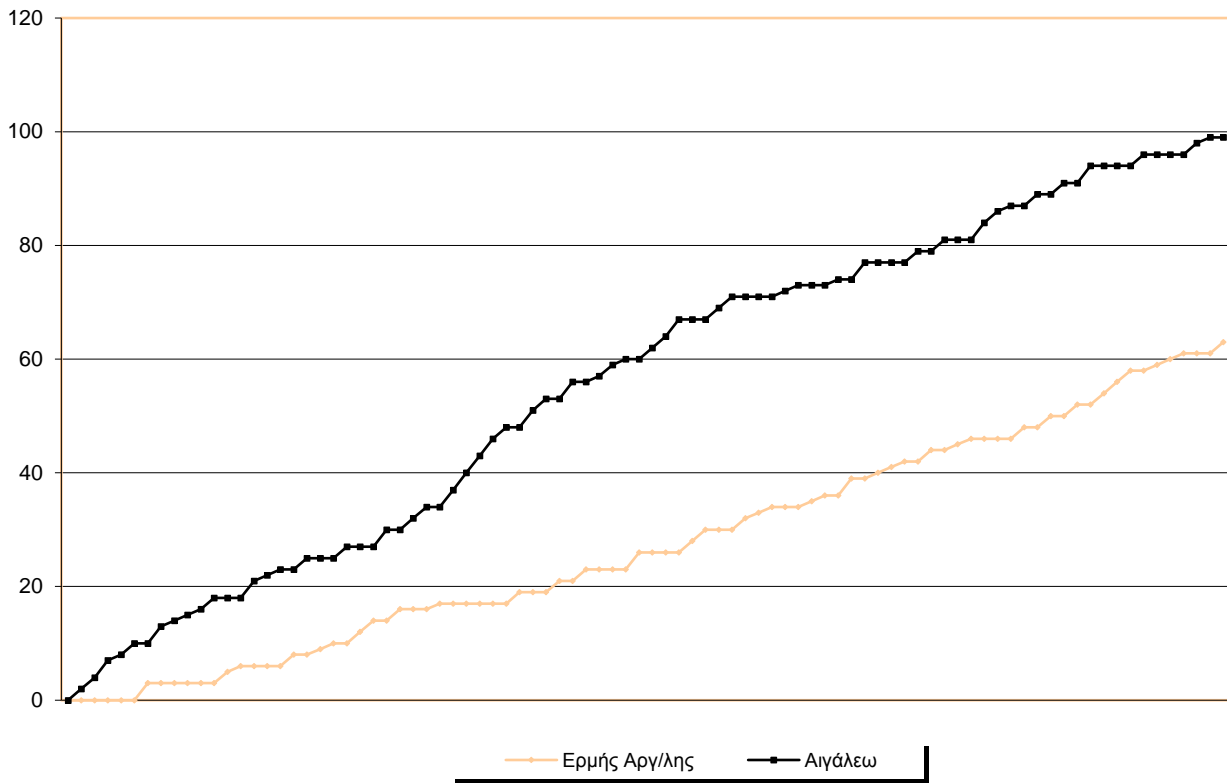
Notes

Ο Ερμής Αργ/λης είχε 104 κατοχές,  
 εκ των οποίων κατέληξαν: 66 σε σουτ  
 15 σε λάθος  
 και 23 σε κερδ. φάουλ

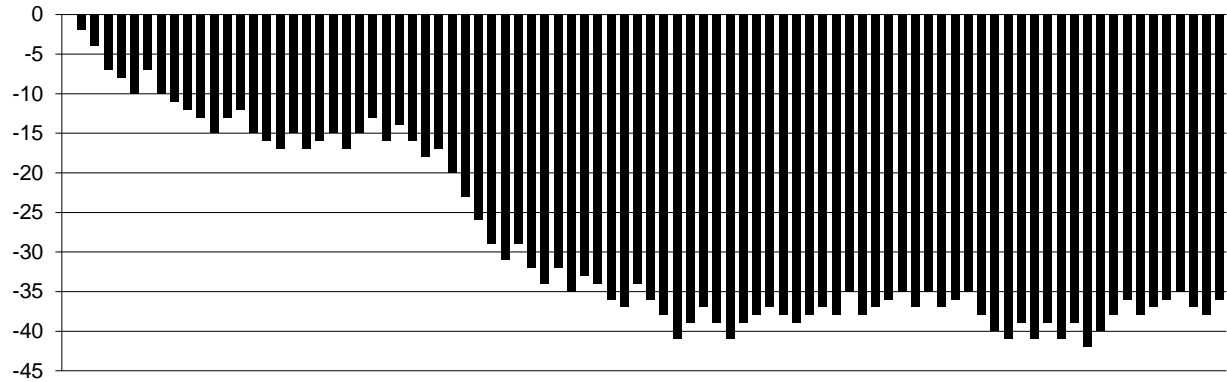


## GRAPHIC STATS

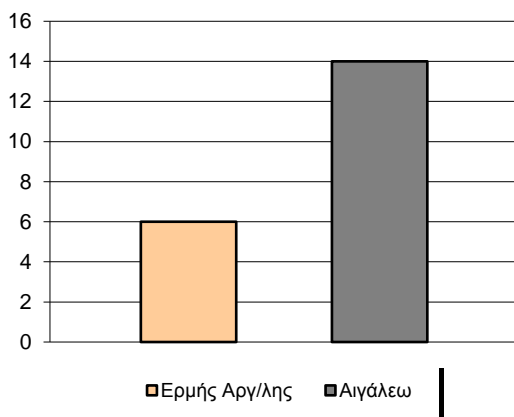
### SCORE EVOLUTION



### SCORE DIFFERENCE



### LARGEST SCORING RUN



### LARGEST LEAD

